



**BALPANDE GROUP  
OF INSTITUTIONS**

Curious to know

Open to think

Capable to choose what is right

Eager to excel

Creative to try new ideas

Passionate to solve problems

# I AM MOVING AHEAD

Ambe Durga Education Society's



## **BALPANDE PUBLIC SCHOOL & JUNIOR COLLEGE**

**Art, Commerce & Science**

**BESA** : Behind Swami Samarth Dham Mandir, Besa Nagpur - 440037

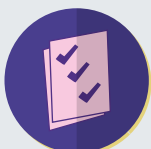
**GIRAD** : Surve No. 184/1, At Post Girad, Taluka Samudrapur, Dist. Wardha - 442305

# Value Based Education

**66** We aim to incorporate right attitude and values in our students to face the difficulties and challenges coming in their journey of life. Focus is given on character building, personality development, citizenship development and spiritual development of our students. **33**



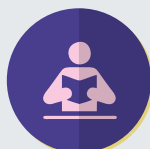
# I AM MADE BY EXPERTS



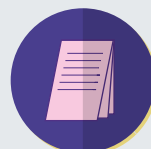
**CURRICULUM  
SUPERSTRUCTURE**



**ASSESSMENTS**



**LESSON  
PLANS**



**PEDAGOGICAL  
PROFILES**



**LEARNING  
GOALS**

## Limited Classroom Strength

The vision of providing quality and personalized education is feasible by maintaining the student ratio in the classroom. The classroom strength is between 35-40 students in each section.

## Integrated Audio-visual Classrooms-e-enabled Classrooms

Every classroom at BPS is equipped with computer, projector, audio - visual system makes learning enjoyable and memorable experience. Technology integrated classrooms makes our students techno savvy.

## Extra Curricular Activities & Co-curricular Activities

BPS would mainly promote extra curricular and co-curricular activities for all round development of students.



**Limited  
Classroom  
Strength**



**Digital  
Classroom**



**BALPANDE GROUP  
OF INSTITUTIONS**

# Sports

## (Inter House Event)

CC

We believe that the learning process needs to include activities to develop overall personality of student, not just academics. Sports and games are therefore, a requisite and integral part of the school curriculum. The school will be incorporating the following sports in its curriculum -

**BASKETBALL, FOOTBALL, THROWBALL, VOLLEYBALL, ATHLETICS, CRICKET, BADMINTON, TABLE TENNIS, ARCHERY, YOGA, KABADDI**

are conducted. All disciplines will be engaged by specialized instructors.

33



### A Shift From Rote Learning

"The NCERT curriculum is shifting away from rote learning and links school knowledge with a child's everyday experience. Project learning is a systematic plan for integrating a broad range of advanced level learning experience and higher order thinking skills into any curriculum or pattern of school organization." <http://cbse.nic.in/>  
BPS emphasis would be on a memorable learning process rather than the traditional memorized learning process.

### Activity Schedule

BPS believes in the overall development of the personality which not only includes scholastics, but also sports as an integrated activity schedule. Sports would include training and coaching facility with state-of-the-art infrastructure. Activities would include a broad spectrum ranging from art and craft to music and drama to photography and IT.

At BPS my teachers are trained intensively throughout the year. They have a wide variety of tools and are enriched and supported for effective teaching.



**THINK**

Think big, think free, because what you think is what you become. Ask questions, find your answers. Make the best possible.



**LEARN**

Open your mind to new ideas. Pursue your passion. Accept mistakes. Move on and learn.



**INNOVATE**

Discover new, every day. Find new ideas that will make a difference. Enjoy a new way of life.







## Vision

To achieve academic excellence in imparting value based education for exploring the potential of students making them global citizen.



## Mission

Imparting value based education for holistic development of students to make them socially responsible and globally competent citizen.



### BPS USP's

- Society is awarded as "IDEAL EDUCATION SOCIETY 2021-22" by Rashtrasant Tukadoji Maharaj Nagpur University, Nagpur.
- Society is established in 1997 under Society's Act 1860 & Trust Act 1950.
- 15 years experience in medical education.
- NAAC A+ & NBA accredited college.

### At BPS

- ERP (School Management System).
- Personalized attention by highly experienced teachers.
- World class sports academy.
- Art and dance studio.
- Quality education at affordable fees.
- School campus spread across 2 acres of land.
- High quality & child friendly pre-school infrastructure.
- 4 acres of sports ground (indoor and outdoor).
- 1 acre of medicinal plants garden for learning.
- Montessori equipment for skill development.
- Different co-curricular activities for kids which enable all round development.
- Individual guidance to each students.



**Dadasaheb Balpande  
College of Pharmacy**  
(B.Pharm., M.Pharm & Ph.D)



**Dadasaheb Balpande  
College of Diploma  
in Pharmacy**

**• Dadasaheb Balpande  
College of Hotel  
Management & Fashion Design**



For Details Contact :

**BALPANDE PUBLIC SCHOOL  
& JUNIOR COLLEGE**

### BESA:

Behind Swami Samarth Dham Mandir,  
Besa Nagpur-440037  
**Mobile : 9022575108**  
Email : bpsbesaedu@gmail.com

### GIRAD :

Surve No. 184/1, At Post Girad,  
Taluka Samudrapur, Dist. Wardha-442305  
**Mobile : 8262918148**  
Email : bpsgiradedu@gmail.com

